

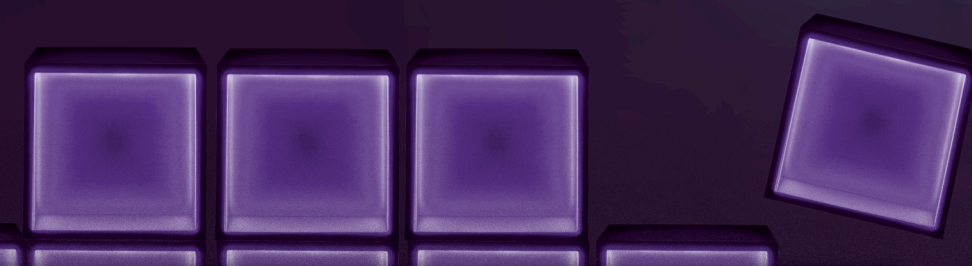


INTERACTIVE STUDIO
MAXIMUM ENTERTAINMENT.

Product Catalog
2025

LIGHTGAME

The interactive floor game for thrilling action!



LightGame is an interactive multi-media game that challenges both body and mind, offering a unique experience for people of all ages. Whether for **families, friends, solo players, or corporate events** – dexterity is put to the test in an exciting way.

The playing field consists of illuminated panels that are activated by touch or stepping on them. In va-

rious single-player and multiplayer modes, players can compete against each other or train their skills on their own.

With LightGame, endless fun is guaranteed – it's the ideal attraction for any leisure facility!

Excitement, action, and full physical engagement – that's LightGame!



A Variety of Game Modes

CLASSIC



Face the ultimate Classic Challenge! Dodge the lightning-fast RedStrikes, collect all the blue PowerSpots, and secure valuable points. The purple Challenge-Spots demand double effort: only the fastest can master them. And if you catch the white Bonus-Spots, you'll grab an extra life!

BATTLEJUMP



In BattleJump, it's 1 vs 1 or team vs team. Choose your challenge from different levels. It's all about speed, precision, and teamwork: the one who masters the levels the fastest, collects the most points, and makes the fewest mistakes emerges as the winner.

MEMORYJUMP



Remember, jump, score! Several spots light up briefly – you have only a few seconds to memorize the correct sequence. Then it's your turn: jump onto the right spots and prove how sharp your memory really is. The quicker and more accurate you are, the more points you earn.

COLORJUMP



In ColorJump, up to four teams compete at the same time. Each team chooses a color at the beginning. Then it's all about keeping your eyes open and reacting fast! Spot your color on the field, jump on the correct spots, and be quicker than the others. Whoever completes the challenge first and discovers all their colors wins!

LIGHTHUNTER



Chase the path of light! A glowing trail shows you the way – but only for a short moment. Then it vanishes. Follow it step by step. Miss a spot, and you're sent back to the start. One wrong move left or right, and the challenge is over! LightHunter – pure excitement and full concentration are required!

LIGHTRUN



The entire playing field is in constant motion – nothing stays the same. Spots appear everywhere that you must collect at lightning speed, while others light up dangerously close by. Whoever collects the most and avoids the wrong spots makes it to the end.

LINEDEFENDER



Stand at the front and hold your line! From left, right, and the center, LightShadows storm toward you – faster and faster, more and more. But you fight back: react quickly and kick them away before they break through. Only those who combine stamina, reaction, and full power can stop the flood of attacks and secure victory.

ARCADE

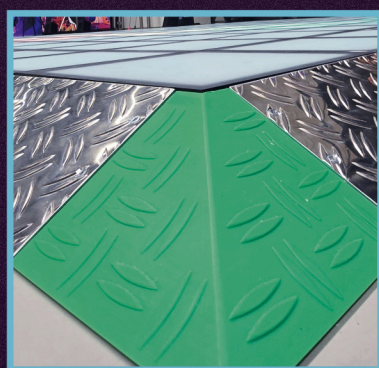


Here you don't just experience one game, but a whole collection of classics in a new style. Smash it in Ping Pong or beat friends in Snake. Many challenges await you – from a super-fast race to Maze-Runner, where you find the right path, to new games that are constantly changing. Whether fast, tactical, or full of nostalgia – Arcade Mode has it all.

Durable, Safe & Flexible

Our panels use the latest capacitive sensor technology for precise touch detection. Since there are no moving parts, the panels are especially durable, waterproof, and easy to clean. A safety ramp prevents players from tripping.

LightGame is available in all variants and for any type of space – whether enclosed rooms, semi-enclosed areas, or open spaces: LightGame can be used flexibly. Depending on the setup, we integrate our safety enclosures or even build matching walls if required.



Each of these game modes comes with countless games and levels.

Ihre Vorteile auf Einem Blick

Promotes Movement & Cognitive Skills

Teamwork & coordination

No Hidden Costs

No annual fees, no franchise

Plug & Play

Coin slot, free play, payment systems via credit card, KMS and/or RFID start

Easy Installation

With or without technician, including safety enclosure

2-Year Warranty & Free Support

Complete peace-of-mind package!

Many Years of Experience

Providing professional leisure solutions since 2012

Free Updates

For software and games (2 years)

No Staff Required

Thanks to touchscreen and payment module, LightGame runs all by itself!

Full Control and Flexibility

Operating Options

LightGame offers a variety of operating options. It can be started with coin insertion, RFID, KMS payment system, credit card, or for free. We are also happy to integrate your payment system or establish a connection to your own software. The coin acceptor is flexibly programmable and supports all common coin denominations.

The touchscreen for starting the game

can either be placed freely in the room or integrated into a wall.

Level Configurator

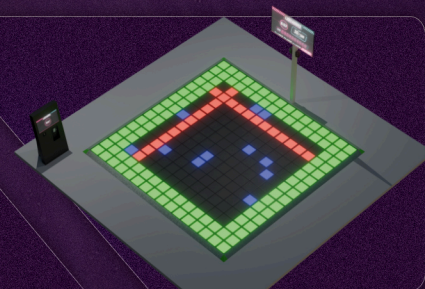
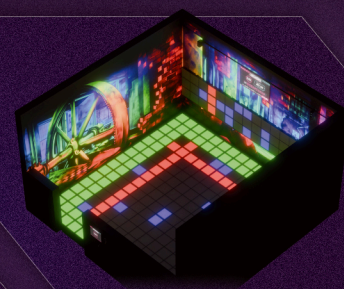
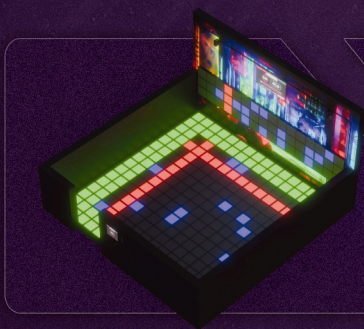
Our user-friendly level configurator makes it easy and straightforward to create new levels at any time. This feature ensures that the gaming experience with LightGame always remains exciting and varied.

Make Your Venue Unique!

Similar to our other products, you can transform LightGame or any interactive game into a unique theme world with our backlight wall designs.

Available in Any Size and Layout

All configurations can be installed free-standing or wall-mounted. The following shows some example configurations.



Sample Sizes – Available in all Sizes and Shapes

Below you will find some sample sizes for price orientation. LightGame is available in every layout and all dimensions – endless configuration possibilities!

Compact

3M X 3M

- ✓ Floor panels for 3x3m
- ✓ Technology cabinet incl. PC
- ✓ Software updates for 2 years
- ✓ Screen
- ✓ RFID system or coin

Starting from 27,900 EUR

Medium

5M X 5M

- ✓ Floor panels for 5x5m
- ✓ Technology cabinet incl. PC
- ✓ Software updates for 2 years
- ✓ Screen
- ✓ RFID system or coin

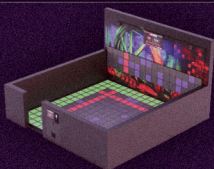
Starting from 34,900 EUR

Large

6M X 6M

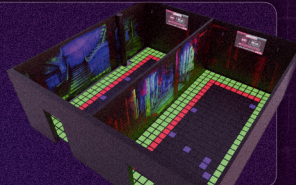
- ✓ Floor panels for 6x6m
- ✓ Technology cabinet incl. PC
- ✓ Software updates for 2 years
- ✓ Screen
- ✓ RFID system or coin

Starting from 36,900 EUR



Our developers can bring any idea to life

On request, we can integrate LightGame into your existing payment systems using our LightGame API.



Wall Terminal
For in-wall
installation



Column Terminal
For free-standing
installation

Every LightGame is Unique

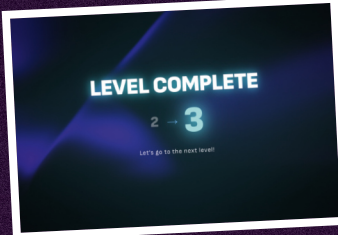
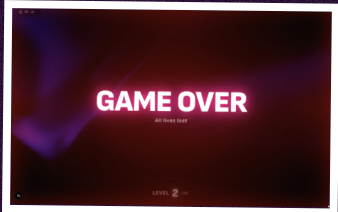
Whether size, shape, or special software requirements: every LightGame is customized to our customers' needs. Here you can see some selected installations.



Modern, Intuitive UI – with Attention to Detail

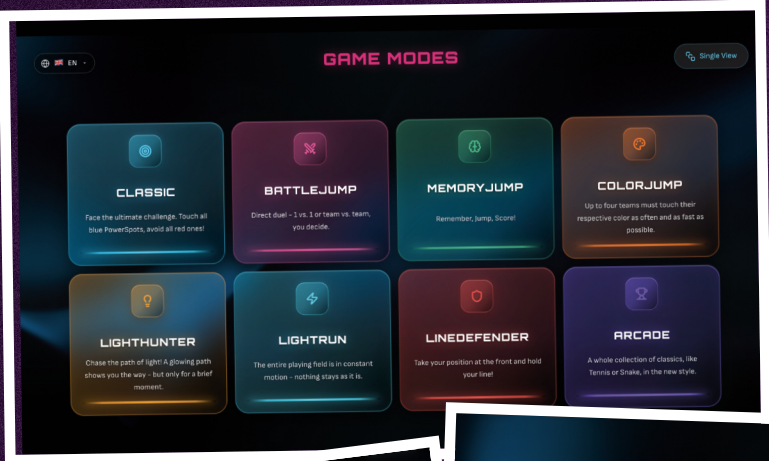
Score TV Display

Our TV display impresses with a neon gaming look featuring stylish animations and dynamic backgrounds.



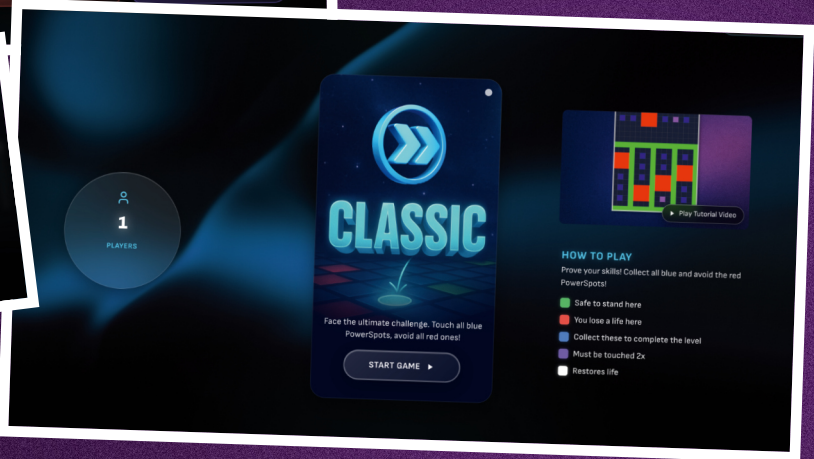
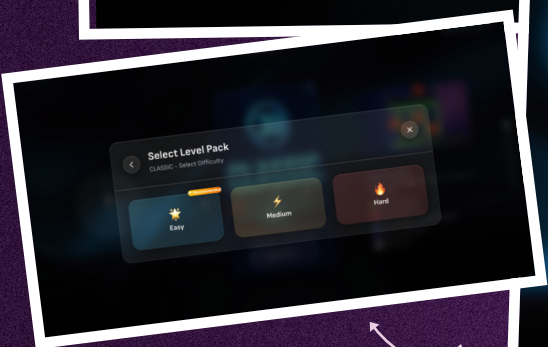
Touchscreen Game Selection

Our intuitive touchscreen selection makes it easy for players to quickly understand the wide variety of game modes.



See Our UI in Action

Scan this QR code to see our touch and TV display in action!



LIGHT GAMES

LightGames – Combining Light and Movement

Our LightGames connect LightGame technology with new ways of moving and innovative game concepts.



LightStriker

Dive into the world of LightStriker, the action-packed game that tests your reflexes and delivers a rush of adrenaline.

The principle is simple, yet addictive: with each ball hit you activate glowing LED panels on the wall. They flash in quick rhythm, and your task is to hit as many as possible within the given time. At the same time, specific color combinations must be targeted. Every hit scores points and pushes your high score even higher. The challenge grows round by round. LightStriker blends movement, speed, and fun into an intense gaming experience that excites guests of all ages.

Speed Wall

Discover a whole new kind of touch challenge with Speed Wall. This interactive game simultaneously tests your agility and reaction time.

Here you need to hit the blue targets at exactly the right moment and avoid the red ones. Glowing touch-points, dynamic sequences, and visual effects turn every round into an intense experience. Step into a world full of movement, light, and adrenaline.

Speed Wall shines with numerous game modes and play variations.

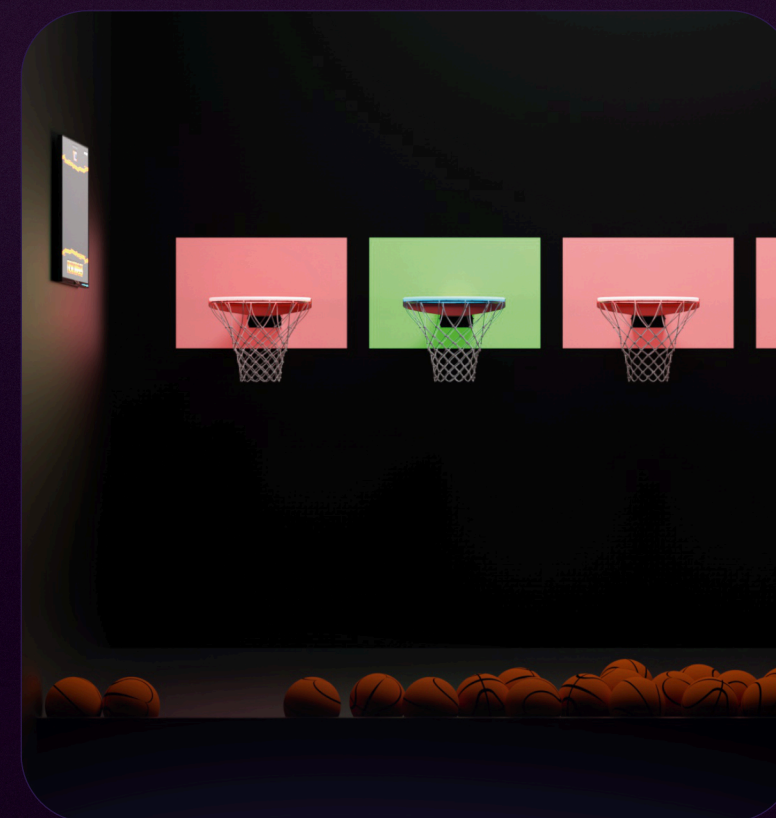


Hyper Shot

Hyper Shot brings new energy to the classic basketball game. In this interactive challenge, it's all about hitting as many of the lit-up hoops as possible within the time limit.

The game combines precision, speed, and non-stop action. Bright targets, fast-paced gameplay, and direct competition make LightBasket an exciting highlight for players of every age.

Experience basketball in a whole new way – dynamic, modern, and bursting with energy.



Contact us directly for personalized advice!

For inquiries: info@interactive-studio.de

Phone: +49 4181 231 921 8

<https://www.interactive-studio.de/activities/light-games>



Website

LASERTAG

Action, Team Spirit, and Strategy in One

Lasertag is much more than just a game: it combines athletic movement with cutting-edge technology, delivering an unforgettable experience for players of all ages. Whether as leisure fun with friends, a corporate team-building event, or a regular recreational activity – lasertag captivates with thrilling missions, dynamic gameplay, and an atmosphere filled with light and sound effects. It becomes both a true crowd magnet and the perfect addition to any modern leisure facility.

Why Lasertag Convinces



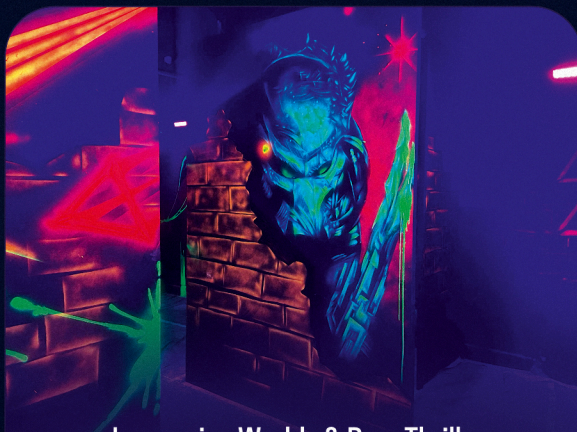
Suitable for All Age Groups

From kids' birthdays to friend groups, company events, or youth clubs – lasertag appeals to a wide range of audiences.



Action Without Injury Risk

Unlike paintball or other contact sports, there are no painful hits – just pure adrenaline and gaming fun.



Immersive Worlds & Pure Thrills

Atmospheric arenas with light, fog, and sound effects transport players into another world. Every hit, every dodge, and every mission creates adrenaline rushes and a real sense of adventure.



Teamwork & Strategy

Lasertag thrives on cooperation, communication, and tactics. Teams craft strategies, take on roles, and celebrate victories together.



Technology & Experience Factor

Modern sensor vests, safe laser effects, sound design, and unique themes ensure an immersive and safe experience – blending excitement, immersion, and replay value.

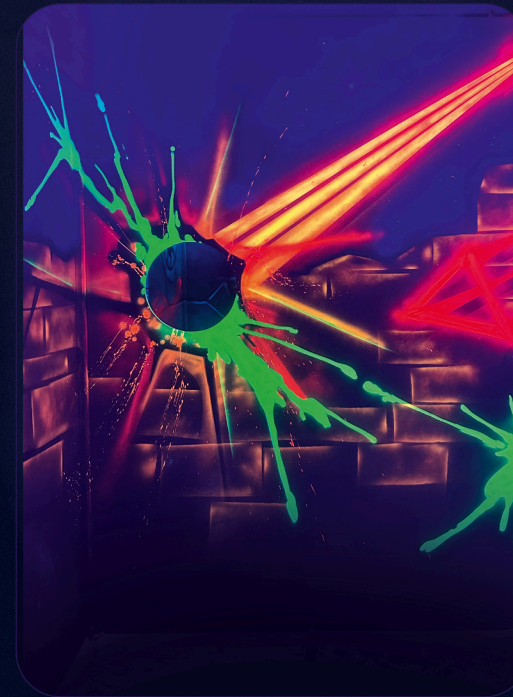
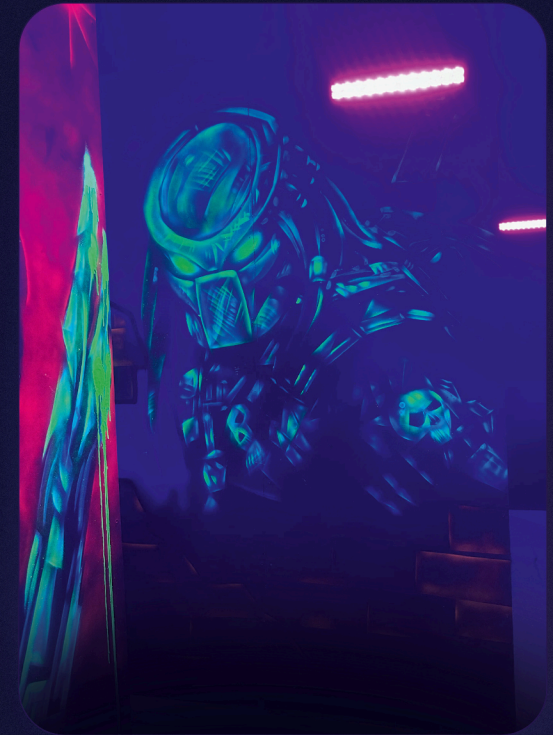
Creating Your Custom Lasertag World

Everything starts with a tailored plan we develop step by step with you. To give you a realistic impression of your future arena early on, we create detailed 3D visualizations that make architecture, play areas, and design ideas tangible.

On request, we also take care of the drywall construction through our in-house builders, who have already built numerous arenas.

We're also happy to handle the creative design of the arena – supported by our experienced graffiti artists, giving each arena a unique and unforgettable atmosphere. UV technology, lighting, and sound are also provided.

For the technical equipment, we work with selected partners to find the systems that best fit your use case and target groups. This creates a customized lasertag world that fascinates your guests and ensures long-term success.



Design Makes the Difference

A thoughtful design is crucial to the success of every lasertag arena. The atmosphere determines whether guests feel transported into an exciting, immersive world – and whether they'll want to return.

That's where our experience and creative team come in: our graffiti artists transform bare walls into lively scenes and themed environments that seamlessly blend with the gameplay.

With years of experience, we know how to infuse excitement, immersion, and recognition value into every detail.

4D Blacklight ADVENTURE GOLF

These 4D Mini-Golf Courses Will Amaze Your Guests!

Mini-golf courses are a long-time favorite in the leisure industry and continue to attract visitors of all ages. With our blacklight mini-golf installations, you stand out in the mini-golf world and create unforgettable, immersive experiences for your guests.

What Makes These Courses Special and Unique



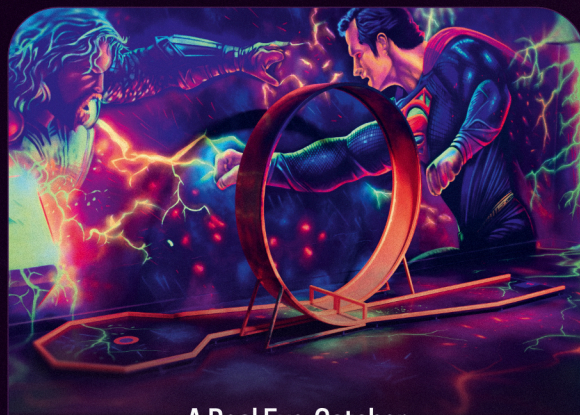
Wide Target Group

Perfect for families, friends, company events, couples, groups, birthdays, and celebrations of all kinds.



From Just 250 m²

We can realize installations even in smaller spaces. Essentially, there are no limits.



A Real Eye-Catcher

Our courses shine with attention to detail. UV course elements blend seamlessly with the wall designs, creating a truly immersive experience.



Low Staffing Needs

Minimal staff required.



Up to 70 Players/Hour

High capacity



Low Maintenance

Durable construction designed for longevity. Should you ever need support, our fast service is always ready to help.



Our Wall Designers Create Entire Theme Worlds

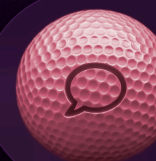
Our talented artists transform any wall into a vibrant work of art that tells a story and sparks imagination. Instead of using prefabricated wallpaper, we hand-paint each wall to ensure unique, individual designs. This not only looks better, but is also far more durable.

Everything from One Source

We support you from planning to turnkey handover.



Choose from **40+ elements** in a wide range of sizes.



1. Planning

We work with you to design the perfect installation – down to the smallest detail.

2. 3D Visualization

Our 3D artists create detailed visualizations of your course.



6. Delivery and Installation of Our Courses

We deliver and install the courses. Once set up, your system is ready to impress.



3. Drywall Construction

We can build out your walls to create an optimal course layout.

4. Electrical Work

We lay all necessary wiring for e.g. our blacklight lamps.



7. Floor Design

Not only are the walls designed, but the flooring is customized to match – completing the immersive experience.

8. Floor Sealing

The floor is now being sealed to ensure durability.

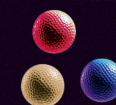


5. 3D Blacklight Wall Design by Our In-House Artists

Our wall designers turn your rooms into immersive themed worlds. Everything is hand-sprayed – no printed wallpaper. Durable and unique.

A Broad Range of Accessories

UV mini-golf balls, UV scorecards, UV clubs, long-lasting UV lamps, sculptures, and more – our wide range of accessories fulfills every wish and perfectly completes your course.



Coming Soon 2026



The Action Game for Agents & Spies

LASER ESCAPE

Movement, Skill & Action Combined

Imagine being the hero in an action-packed movie, navigating through a labyrinth of laser beams to complete your mission. With precision, agility, and a touch of strategy, you must find your way through the dazzling laser scenery. Whether you're looking for a thrilling individual challenge or a one-of-a-kind group experience, Laser Escape delivers endless fun for every adventurer

Why Laser Escape Convinces



Wide Target Group

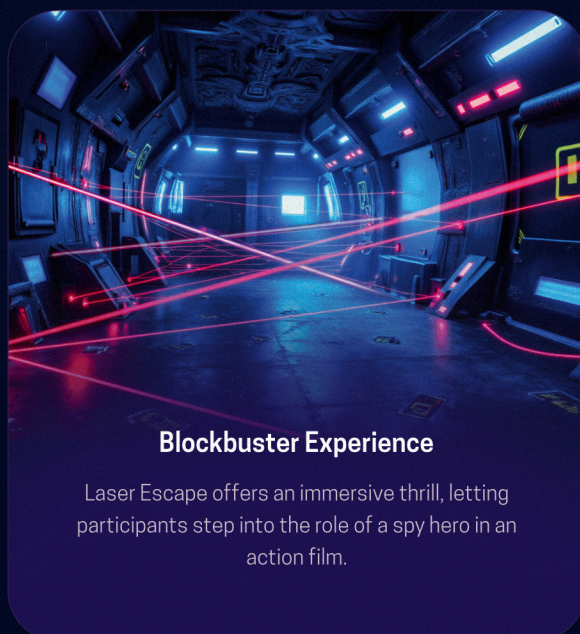
Entertainment for all ages – ideal for families, team-building events, birthdays, and more.



Flexible Sizes

Small, medium, or large

Our installations fit any space. There are virtually no limits.



Blockbuster Experience

Laser Escape offers an immersive thrill, letting participants step into the role of a spy hero in an action film.



All-in-One Service

Service A-Z

We support you from planning to implementation, from visualization to installation – everything from a single source.



High Replay Value

Durable, low-maintenance design ensures long-lasting fun. If service is ever needed, our fast support is there for you.

Low Maintenance

A Fantastic Alternative or Addition to Lasertag

While lasertag emphasizes team battles in large arenas, Laser Escape offers a unique adventure that focuses on skillful movement and strategic thinking.

Compared to traditional lasertag, Laser Escape requires less maintenance, since the compact setup needs less on-site supervision and equipment for guests. This saves operators both time and money, while still offering guests a unique and exciting experience.

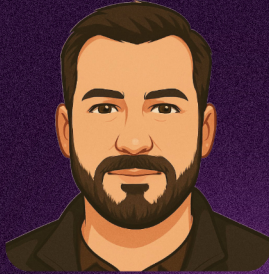


Safe and Reliable

Laser Escape meets the highest safety standards and delivers top-quality experiences. The installations are designed to provide players with a safe environment while modern technologies ensure precise control of the laser beams.

Made in Germany, Laser Escape fulfills strict German quality and safety standards – guaranteeing long-lasting and reliable use of your installation.

Lernen Sie unser Team kennen!



Henry
Sales & Founder



Dirk
Development & Founder



Christina
Planning & Development



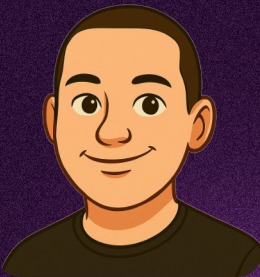
Lukas
Design & Development



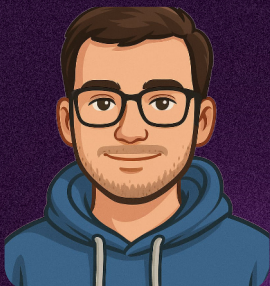
Sascha
Design & Development



Samar
Finance



Max
Development



Lennard
Development

We're Hiring!

Are you looking for a job?
Interactive Studio offers
many exciting career
opportunities.

Reach out at
info@interactive-studio.de

Contact Us Now!

+49 4181 231 921 8
info@interactive-studio.de
www.interactive-studio.de

Interactive Studio
Amselweg 1a
21244 Buchholz in der Nordheide



INTERACTIVE STUDIO
MAXIMUM ENTERTAINMENT.



Website